



INTERNAL AFFAIRS SECTION

ANNUAL REPORT

2017

1705 Officers*

450 Civilians*

A blue ink signature of Joel F. Fitzgerald, Sr.

Joel F. Fitzgerald, Sr., Ph.D.
Chief of Police

2/22/2018
Date

* Employee counts are filled positions as of 12/31/17

SYSTEM REPORTING LIMITATIONS

- Information includes data pulled into the IPro system as of 01/01/18.
- Incidents entered into BlueTeam are given a received date based on when the person entering received information about the event. The following reports are based on cases with a noted received date between 01/01/17 and 12/31/17.
- Use of Force reports are made on all incidents where an officer used force on a citizen. The report itself does not mean any administrative violations occurred. If a use of force is flagged for possible violations, it is duplicated into an administrative investigation and the use of force is closed out as “combined with another case”.
- In some cases, reports are entered with incomplete information. Incomplete data show in these reports under the label of “No Data”.
- Other unique reporting challenges or interpretation guidelines for individual reports are noted in the explanatory textbox on each report page.
- As with all information collection systems, the quality of data entered affects the quality of data reported. In addition, certain statistics are currently unavailable since the FWPD currently enters reports on an incident-based system as opposed to a citizen-based system. Within the limitations of our reporting, here are the summary totals for FWPD:

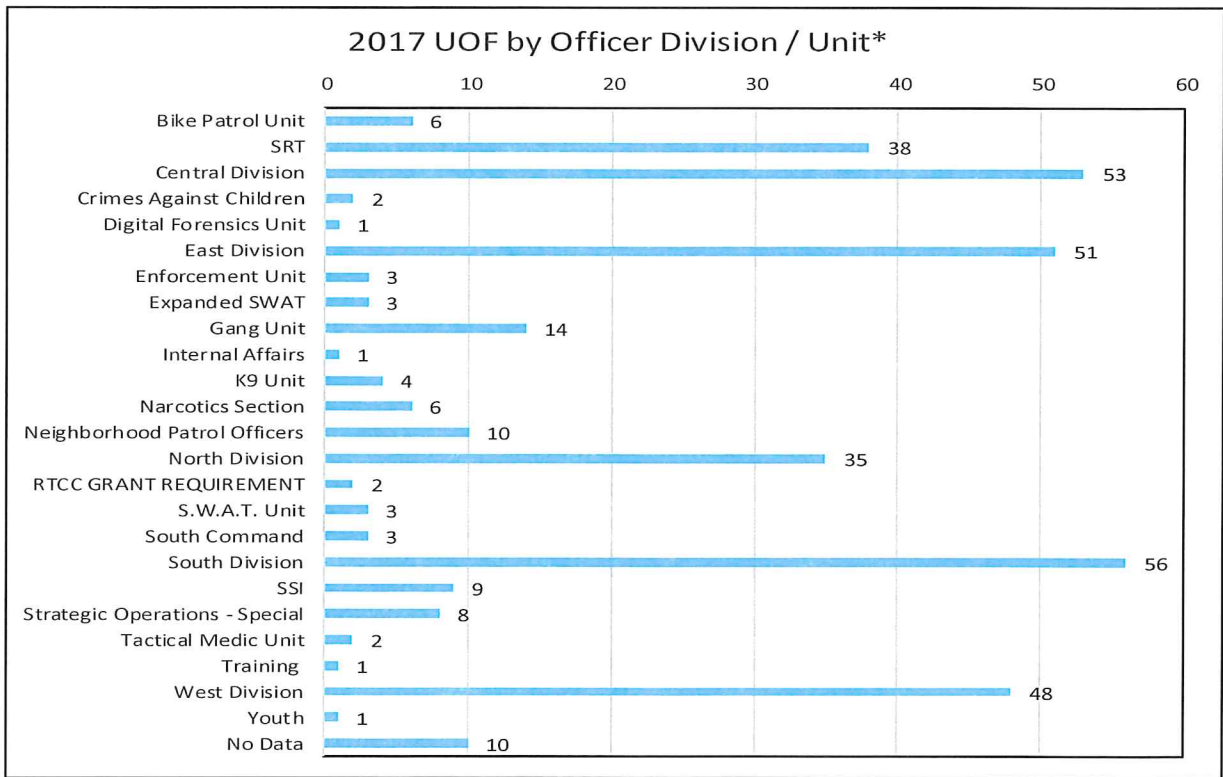


Use of Force

- The total number of UOF incidents for 2017 is 341.
- The total number of officers involved in a UOF incident in 2017 is 355.
- The total number of citizens involved in a UOF for 2017 is 351.
- The total UOF incidents pending review and not included is 16
- The total UOF incidents in 2017 decreased 16% compared to 2016.

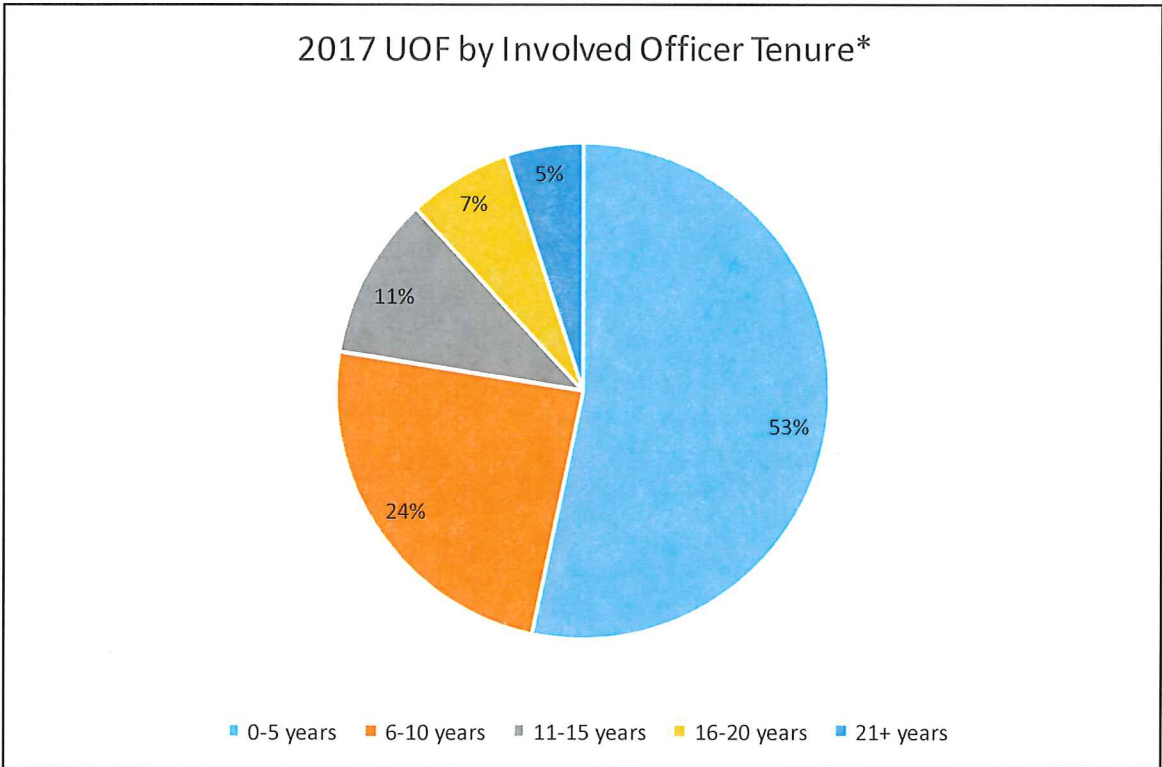
2017 UOF by Officer Division / Unit*	
Bike Patrol Unit	6
SRT	38
Central Division	53
Crimes Against Children	2
Digital Forensics Unit	1
East Division	51
Enforcement Unit	3
Expanded SWAT	3
Gang Unit	14
Internal Affairs	1
K9 Unit	4
Narcotics Section	6
Neighborhood Patrol Officers	10
North Division	35
RTCC GRANT REQUIREMENT	2
S.W.A.T. Unit	3
South Command	3
South Division	56
SSI	9
Strategic Operations - Special	8
Tactical Medic Unit	2
Training	1
West Division	48
Youth	1
No Data	10
TOTAL	370

* The *2017 UOF by Officer Division / Unit* chart shows all incidents of UOF that occurred in 2017. Breakdown is by Unit as available, Division by default. Each incident may involve more than one officer, so in cases where officers are from different divisions, the UOF is counted for each represented division. This is why the UOF count for this chart is higher than the total 2017 UOF incident count of 341.



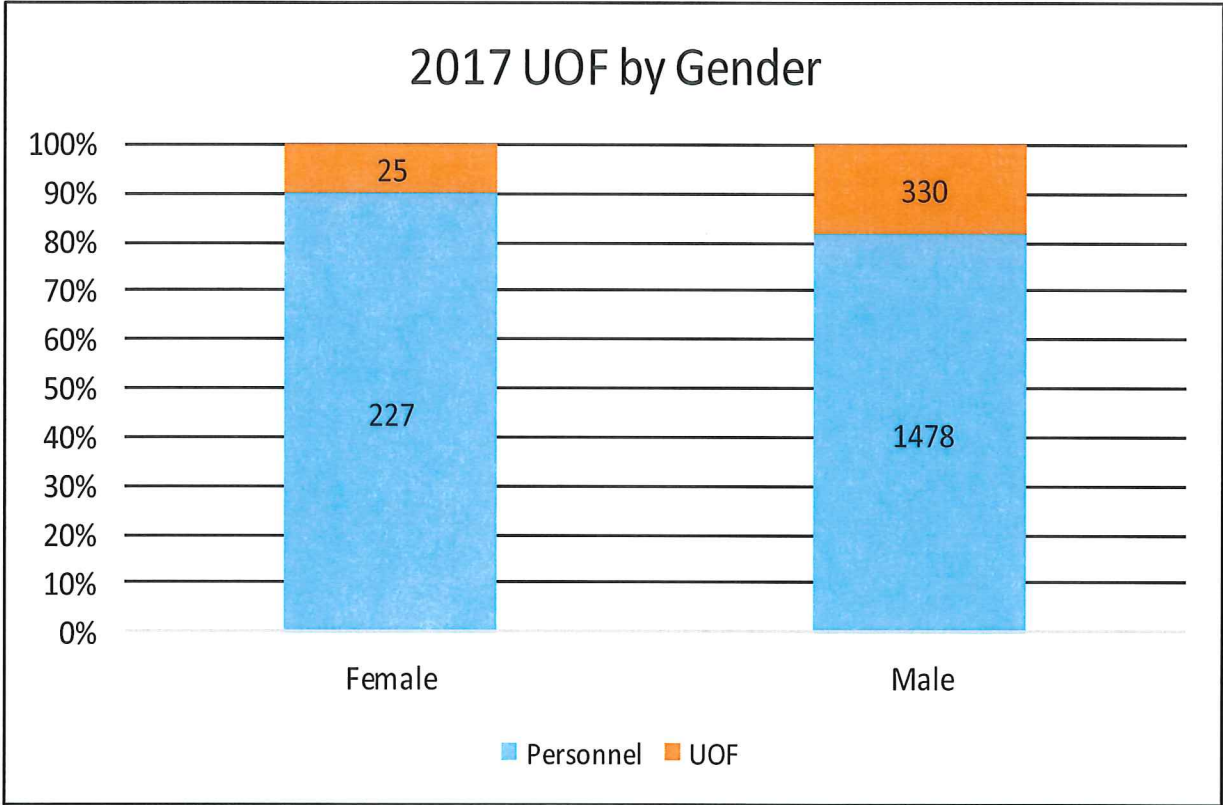
2016 UOF by Involved Officer Tenure*	
0-5 years	211
6-10 years	96
11-15 years	42
16-20 years	27
21+ years	20
TOTAL	396

* The *2017 UOF by Officer Tenure* chart shows the number of officers who used force at least once in 2017, sorted by the number of years the involved officer has been employed with the FWPD. This chart counts UOF by number of officers, and some officers had UOF incidents in multiple tenure categories during the year, thus the difference in totals from previous charts.



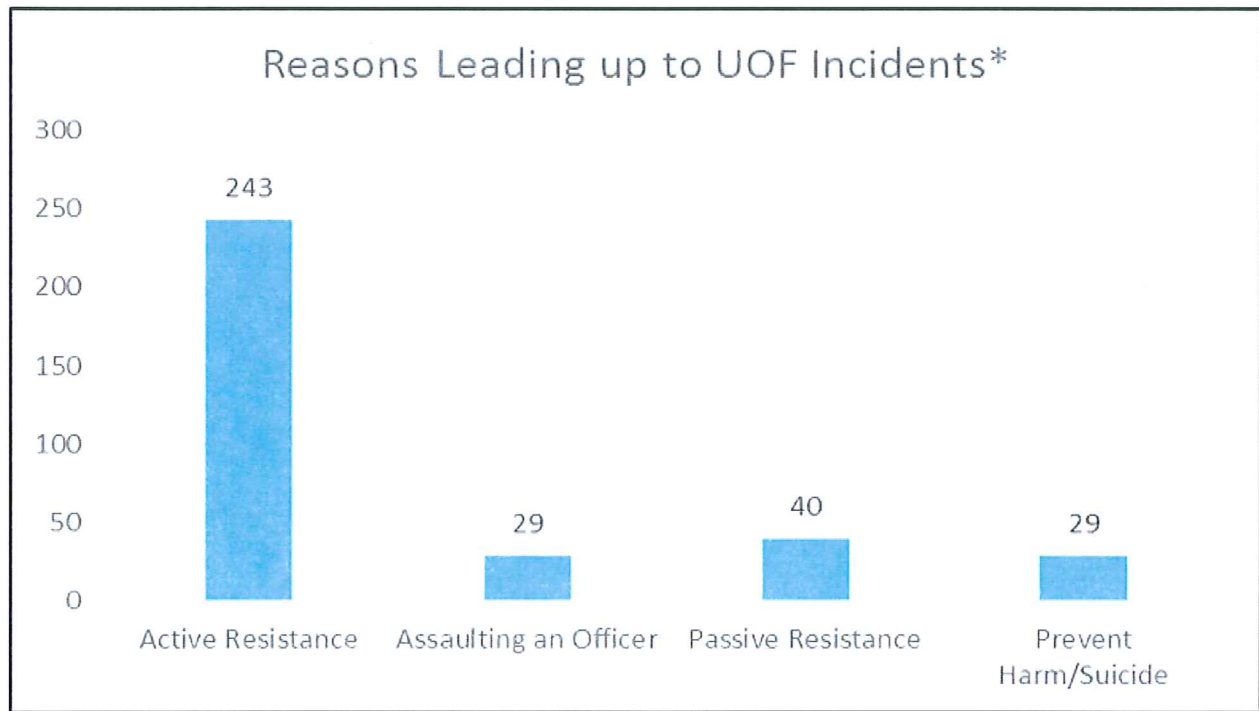
2017 UOF by Gender *		
	UOF	Personnel
Female	25	227
Male	330	1478
TOTAL	355	1705

* The *2017 UOF by Gender* chart shows the breakdown of UOF by the Gender of the involved officer in relation to the total number of officers employed.



Reasons Leading up to UOF Incidents*	
Active Resistance	243
Assaulting an Officer	29
Passive Resistance	40
Prevent Harm/Suicide	29
TOTAL	341

* The *Reasons Leading up to UOF Incidents* chart shows the reason force against a citizen was necessary. Oftentimes more than one reason may lead to UOF, but for data entry, the main overall reason was selected for the incident as a whole.



Reason for Force by Officer and Citizen Race

Reason For UOF	Officer Race	Citizen Race	Count of Officer
Active Resistance	Amind	Asian	1
		Black	1
		White	1
	Asian	Black	2
		Hispanic	1
		White	1
	Black	Black	12
		Hispanic	7
		Other	1
		White	8
	Hispa	Black	19
		Hispanic	32
		White	27
	White	Asian	3
		Black	84
		Hispanic	63
		White	74
No Data		1	
No Data	Black	1	
	Hispanic	1	
Assaulting an Officer	Asian	Black	1
		Hispanic	1
		White	1
	Black	Hispanic	1
	Hispa	Black	2
		Hispanic	1
		White	4
Pacif	Black	1	
White	Black	11	
	Hispanic	10	
	White	13	
Passive Resistance	Amind	Black	1
	Asian	Black	1
	Black	Black	3
		White	2
	Hispa	Black	4
		Hispanic	3
		White	8
White	Asian	1	
	Black	9	

		Hispanic	13
		White	11
		No Data	3
Prevent Harm/Suicide	Black	Asian	1
		Black	2
		Hispanic	1
		White	1
		No Data	1
	Hispa	Black	3
		Hispanic	1
		White	1
	White	Asian	1
		Black	7
		Hispanic	13
		White	10
Total UOF Interactions			487

* The *Reason for Force by Officer and Citizen Race* chart shows the comparison between officer and citizen race during uses of force with a breakdown showing the reason the force was used. Due to the reporting system in place at this time, counts are duplicated to show any possible interactions from a UOF incident. Thus, if there are two officers and two citizens, four UOF counts will occur even if each officer only dealt with one citizen each. It is due to these limitations, as well as the possibility that an officer may have used force on more than one citizen, that the count here is higher than the UOF incident count.

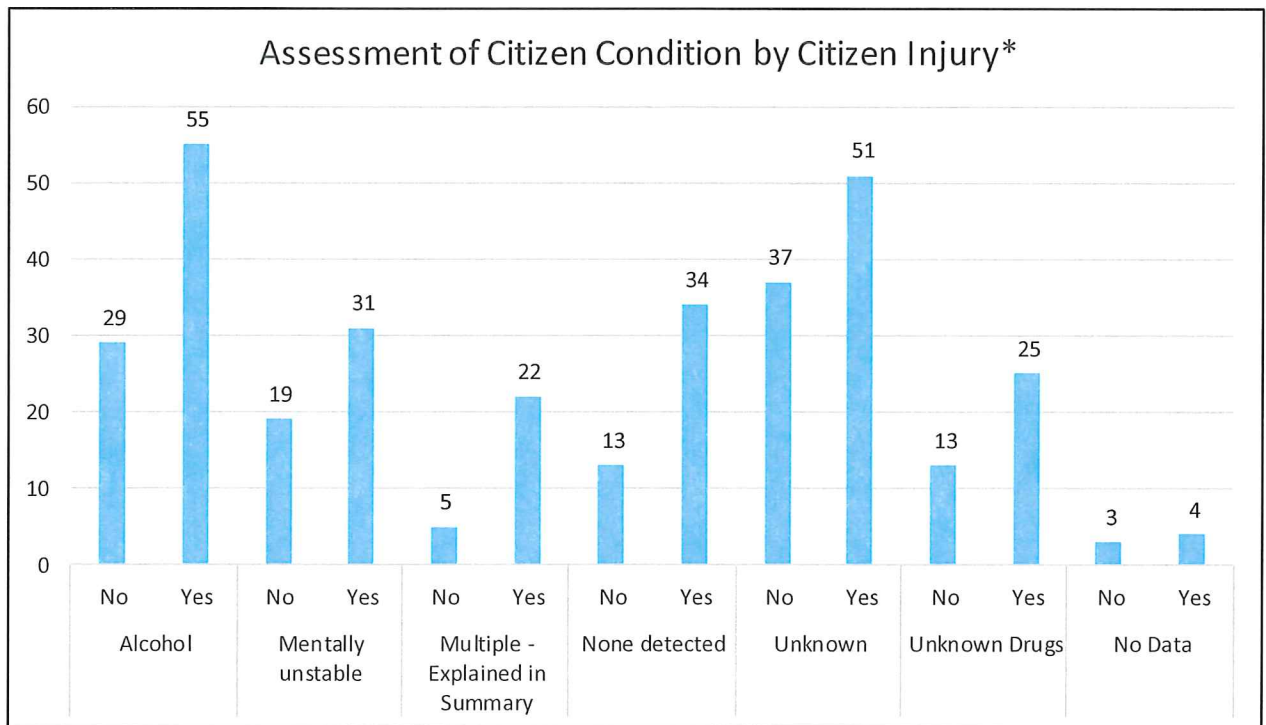
Assessment of Citizen Condition by Citizen Injury*

Officer assessment of citizen condition	Citizen was injured	Count of Citizens
Alcohol	No	29
	Yes	55
Mentally unstable	No	19
	Yes	31
Multiple - Explained in Summary	No	5
	Yes	22
None detected	No	13
	Yes	34
Unknown	No	37
	Yes	51
Unknown Drugs	No	13
	Yes	25
No Data	No	3
	Yes	4

Total UOF Interactions

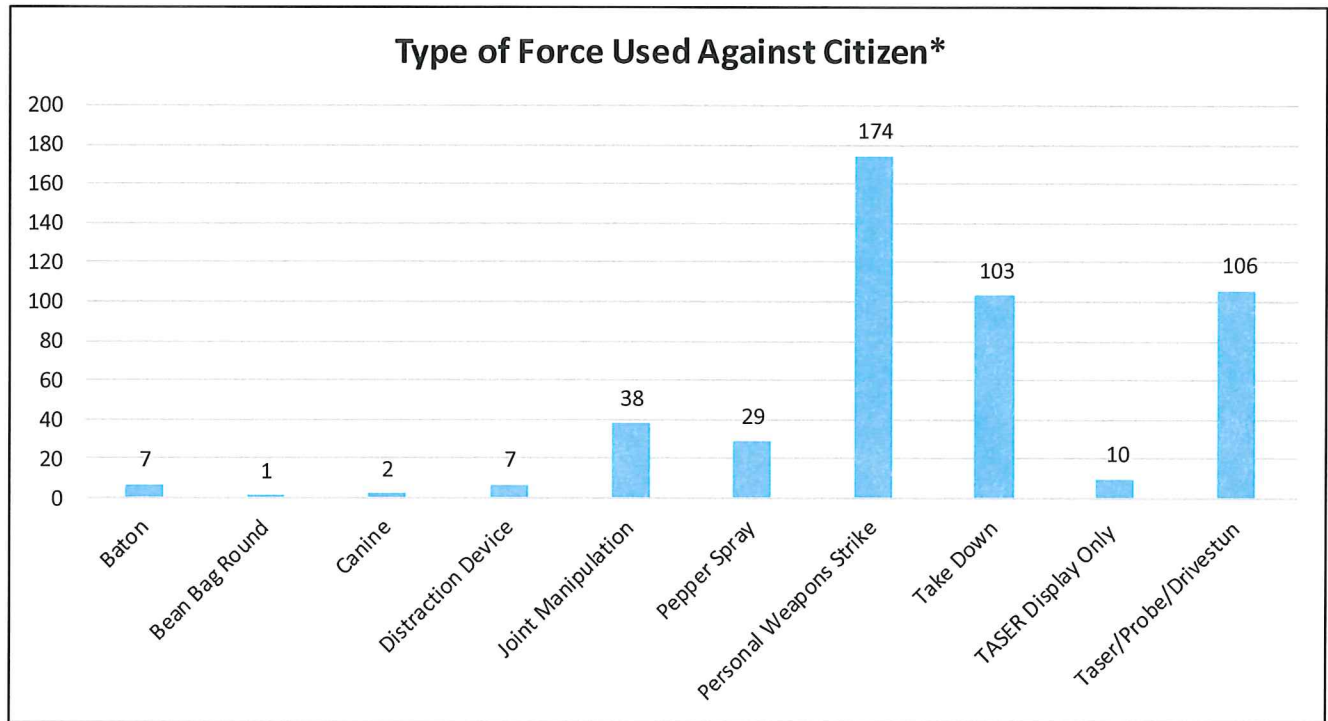
341

* The **Officer Assessment of Citizen Condition by Citizen Injury** chart shows the perceived condition the citizen was in during the time of the use of force and is broken down to show the number citizen injuries. Note that some citizens may have had injury prior to any use of force.



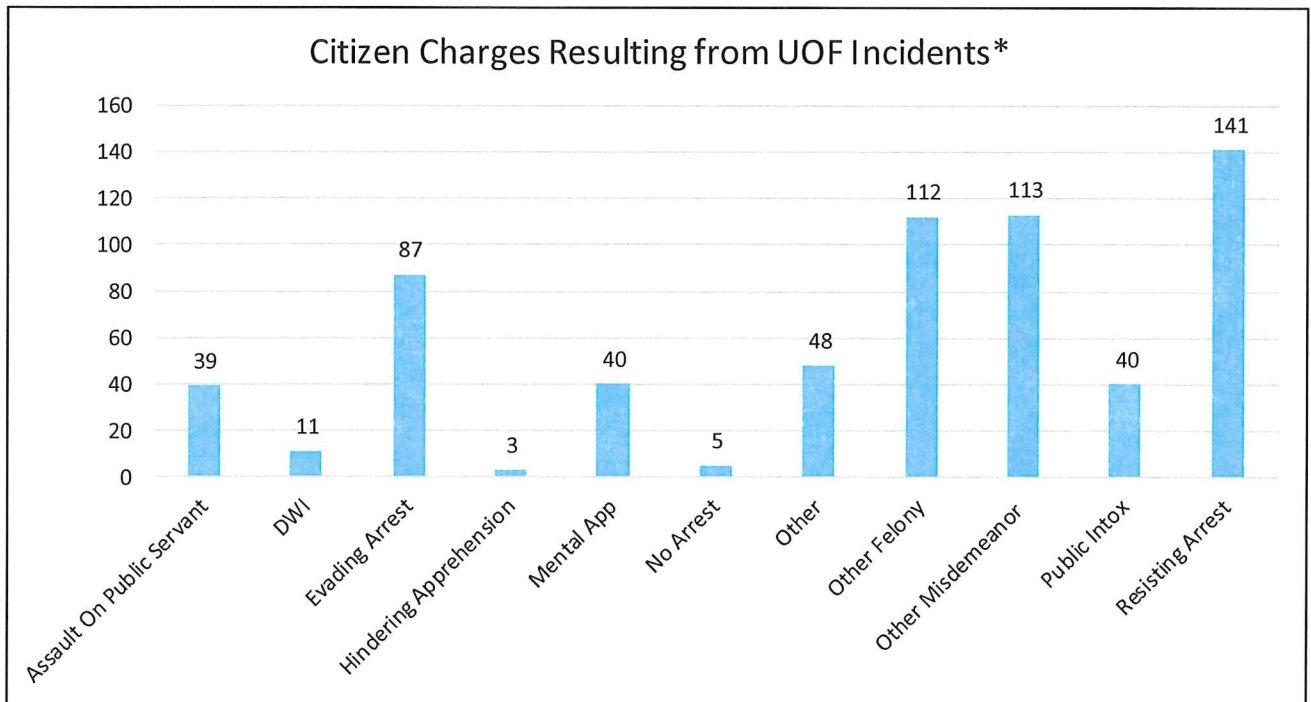
Type of Force Used Against Citizen*	
Baton	7
Bean Bag Round	1
Canine	2
Distraction Device	7
Joint Manipulation	38
Pepper Spray	29
Personal Weapons Strike	174
Take Down	103
TASER Display Only	10
Taser/Probe/Drivestun	106
TOTAL	477

* The *Type of Force Used During UOF* chart shows the type of force against a citizen. Often times there are multiple types of force used during an UOF incident. Therefore, the count here is higher than the UOF incident count.



Citizen Charges Resulting from UOF Incidents*	
Assault On Public Servant	39
DWI	11
Evading Arrest	87
Hindering Apprehension	3
Mental App	40
No Arrest	5
Other	48
Other Felony	112
Other Misdemeanor	113
Public Intox	40
Resisting Arrest	141
TOTAL	640

* The *Citizen Charges resulting from UOF Incidents* chart shows the charges against a citizen resulting from the use of force. Often times the citizen is charged for multiple offenses. Therefore, the count here is higher than the UOF incident count



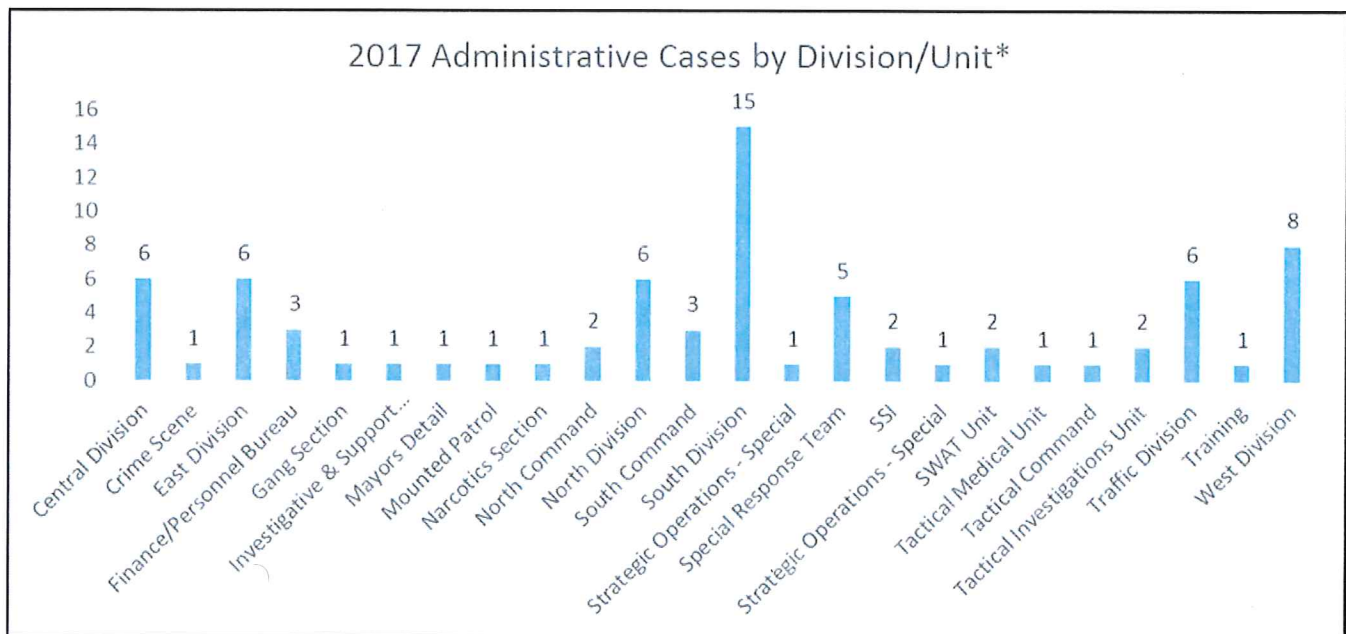


Administrative Cases

- The total number of Administrative Cases with action taken for 2017 is 77.
- The total number of minor complaints in 2017 is 209.
- The total number of Administrative Cases pending review and not included is 15
- The total number of Administrative Cases in 2017 decreased 14% compared to 2016.

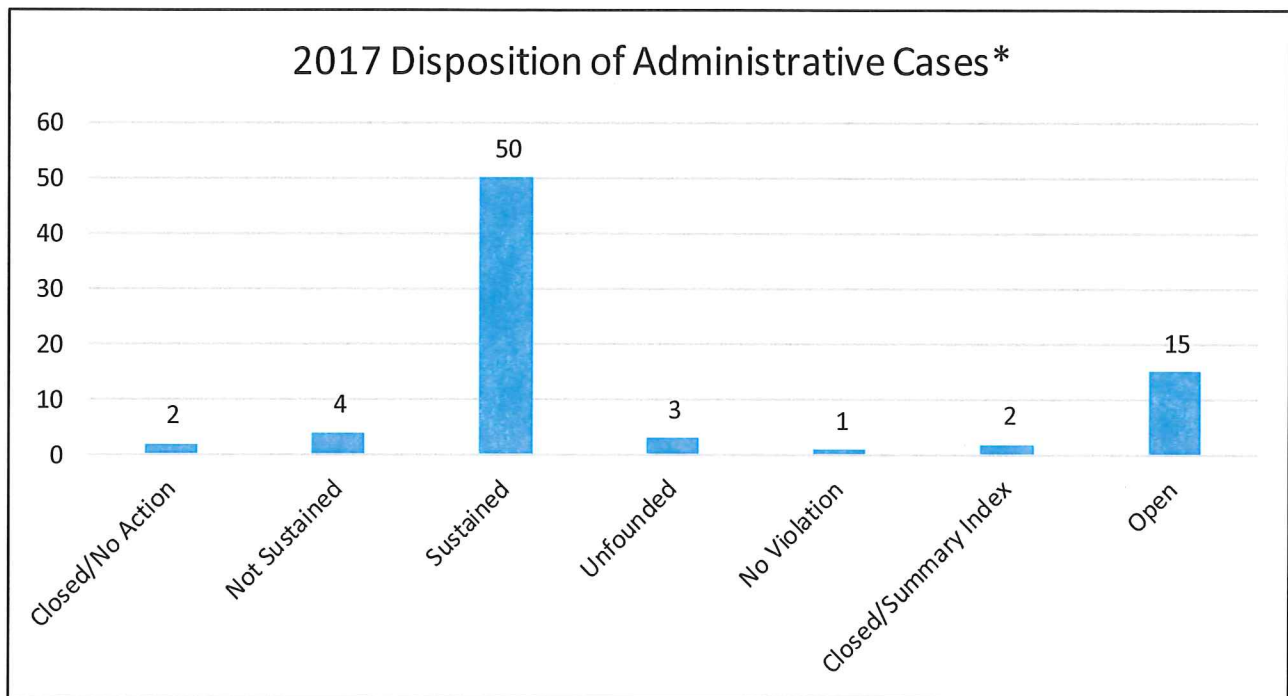
2017 Administrative Cases by Division/Unit*	
Central Division	6
Crime Scene	1
East Division	6
Finance/Personnel Bureau	3
Gang Section	1
Investigative & Support Command	1
Mayors Detail	1
Mounted Patrol	1
Narcotics Section	1
North Command	2
North Division	6
South Command	3
South Division	15
Strategic Operations - Special	1
Special Response Team	5
SSI	2
Strategic Operations - Special	1
SWAT Unit	2
Tactical Medical Unit	1
Tactical Command	1
Tactical Investigations Unit	2
Traffic Division	6
Training	1
West Division	8
TOTAL	77

* The *2017 Administrative Cases by Involved Division / Unit* chart includes cases that were assigned an IA number and investigated by either Internal Affairs or the Field. This data does not include Vehicle Accidents. Breakdown is by Unit as available, Division by default.



2017 Disposition of Administrative Cases*	
Closed/No Action	2
Not Sustained	4
Sustained	50
Unfounded	3
No Violation	1
Closed/Summary Index	2
Open	15
TOTAL	77

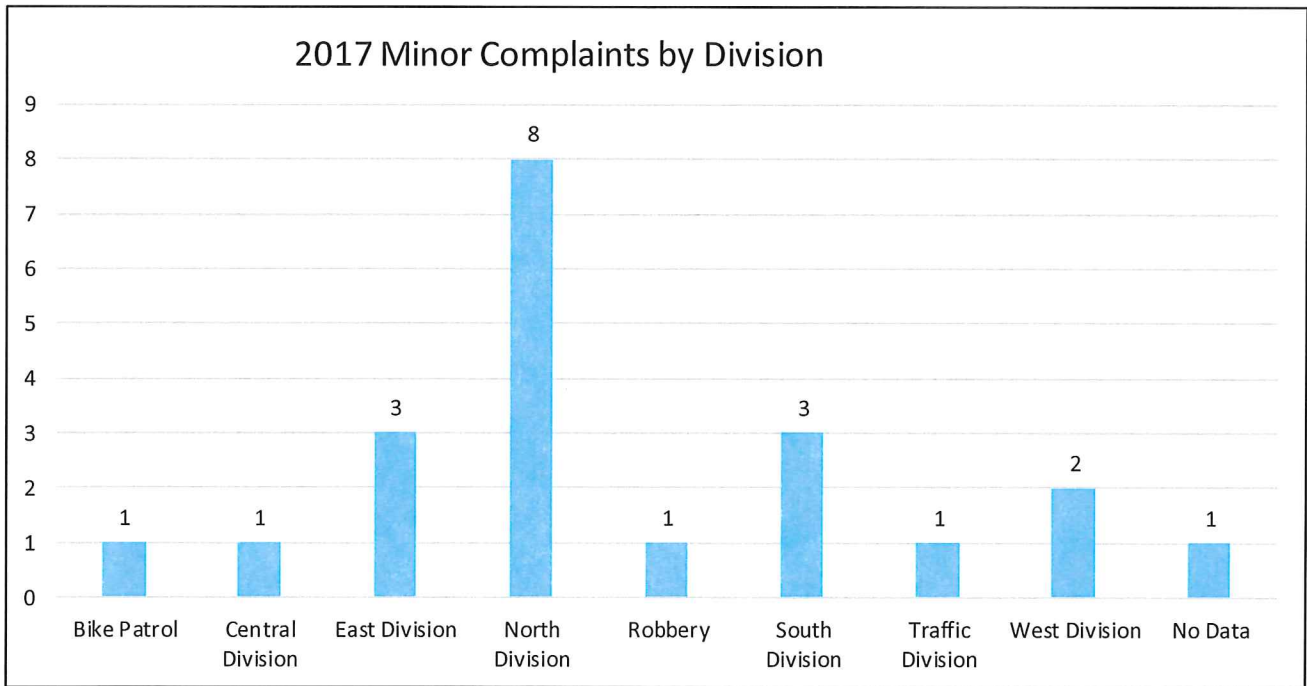
* The *2017 Disposition of Administrative Cases* chart includes cases that were assigned an IA number and includes both IAS investigations as well as Field investigations. This data does not include Vehicle Accidents. Disposition denotes the finality of the incident as a whole, not individual allegations.



2017 Minor Complaints*	
Received by Internal Affairs	209
Forwarded to Division	21

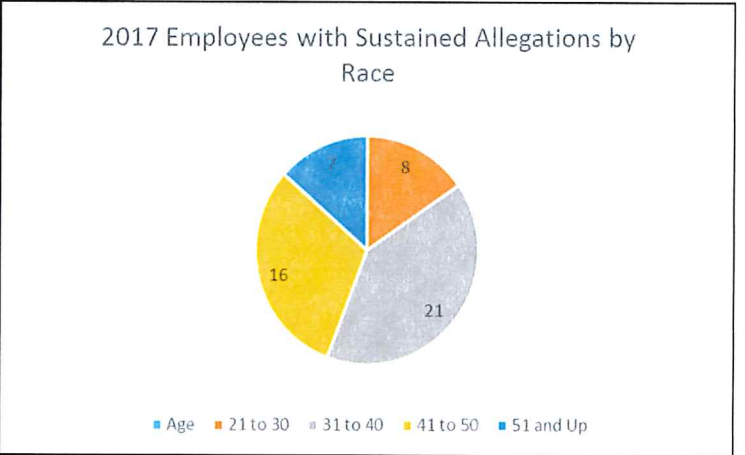
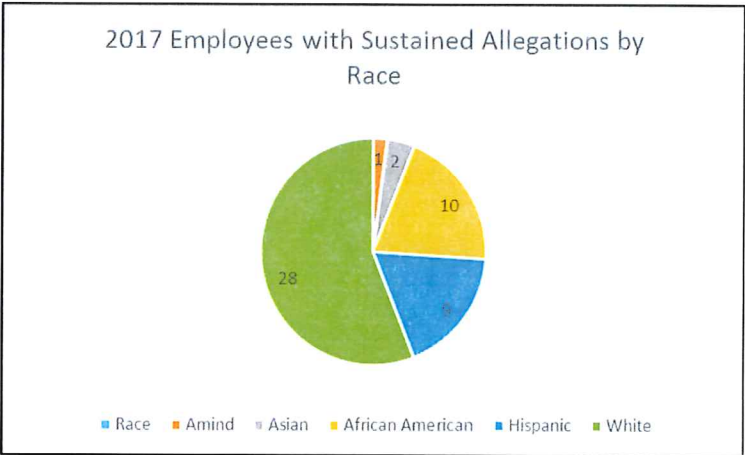
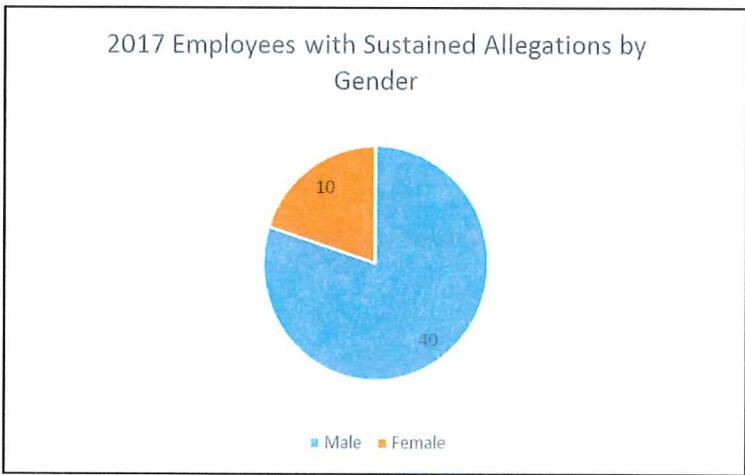
2017 Minor Complaints by Division*	
Bike Patrol	1
Central Division	1
East Division	3
North Division	8
Robbery	1
South Division	3
Traffic Division	1
West Division	2
No Data	1
TOTAL	21

* *The 2017 Minor Complaints by Division* chart shows the number of minor complaints by citizens which were received into the Internal Affairs office and then sent to the Field for review.



2017 Involved Employees with Sustained Allegations *	
Gender	
Male	40
Female	10
Race	
Amind	1
Asian	2
African American	10
Hispanic	9
White	28
Age	
21 to 30	8
31 to 40	21
41 to 50	16
51 and Up	7

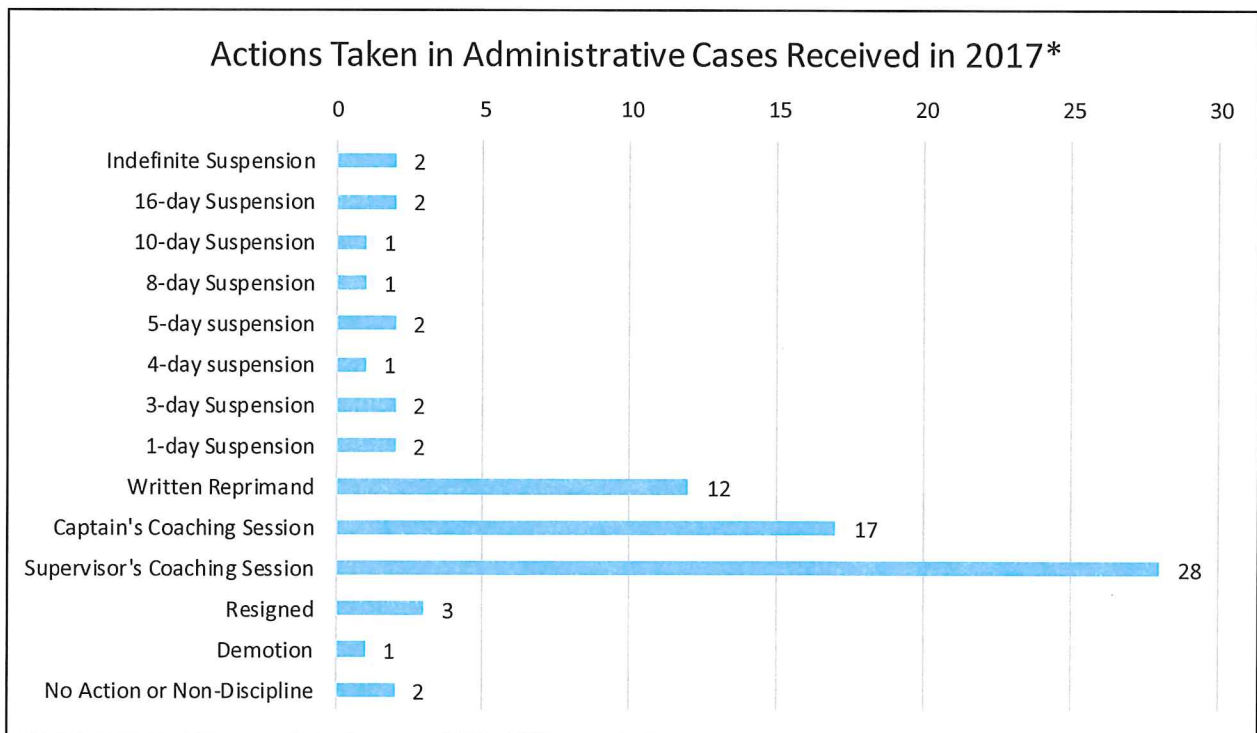
* The *2017 Involved Employees with Sustained Allegations* chart shows the demographic breakdown of officers and civilian employees that had investigations resulting in sustained findings on any administrative allegations. This data does not include Vehicle Accidents. In any one case there may be multiple officers and the same officer may be in multiple cases; officer demographics are counted separately for each instance, thus an officer may show different ages depending on the dates of the occurred incident.



Actions Taken in Administrative Cases Received in 2017*	
Indefinite Suspension	2
16-day Suspension	2
10-day Suspension	1
8-day Suspension	1
5-day suspension	2
4-day suspension	1
3-day Suspension	2
1-day Suspension	2
Written Reprimand	12
Captain's Coaching Session	17
Supervisor's Coaching Session	28
Resigned	3
Demotion	1
No Action or Non-Discipline	2
TOTAL	77

* The *Actions Taken in Administrative Cases Received in 2017* chart includes cases that were assigned an IA number and includes both IAS investigations as well as Field investigations. This chart only includes those cases in which the incident action was taken in 2017. Additionally, any remaining open cases are not included.

Since each case may have multiple officers, and there may be multiple actions taken on the same case or none at all. Additionally, verbal counseling and remedial training are not tracked in this system, so for the purposes of this report, these items are considered “no action”.



2017 Top Sustained Allegations by Officer Tenure*

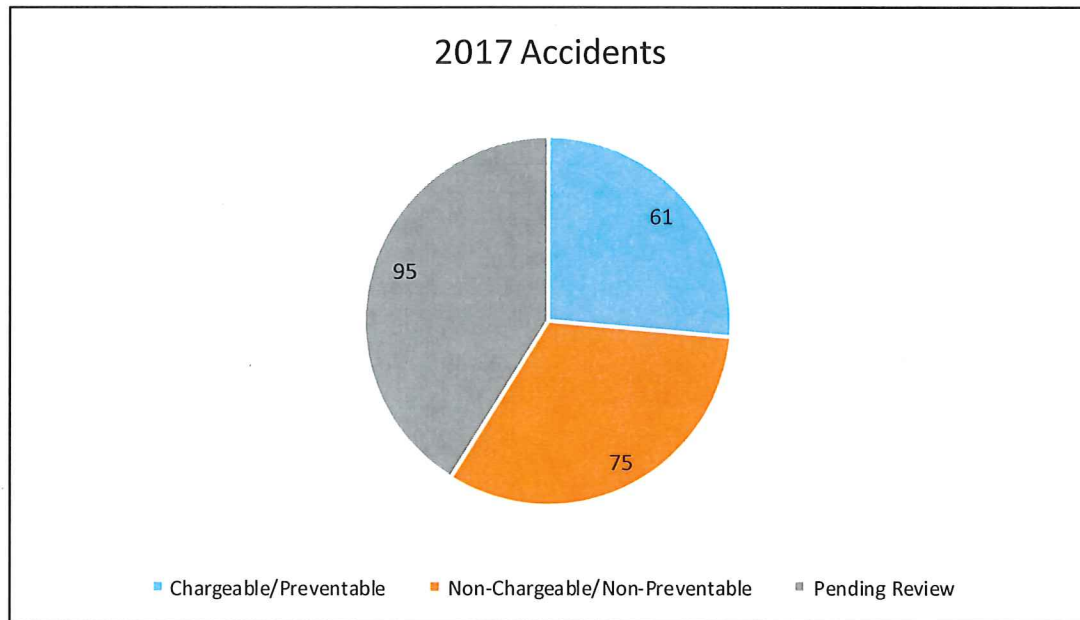
Officer Tenure (Years Employed)	(0-5)	(6-10)	(11-15)	(16-20)	(21+)	No Data	TOTAL
Accident / Vehicle Operations	36	11	11	4	7	3	72
Professional Conduct / Discourtesy	10	6	2	3	3	0	24
Neglect of Duty	5	0	3	3	6	0	17
Police Pursuit Violation	5	8	3	0	1	0	17
Fail to observe statutes, policies and/or procedures	5	0	6	1	3	1	16
Fail to make report	8	2	2	1	2	1	16
Untruthfulness	5	0	2	3	2	1	13
Use of Force	5	2	3	0	1	0	11
Justified Unfavorable Criticism	1	0	1	2	2	0	6
False Report or Record	3	0	1	0	2	0	6
TOTAL	83	29	34	17	29	3	198

* The *2017 Top Sustained Allegations by Officer Tenure* chart shows the top 10 allegations during 2017 based on number of occurrences. Officer may have multiple sustained allegations in each case. This is why the count for this chart is higher than the 50 sustained cases in the 2017 Disposition of Administrative Cases.



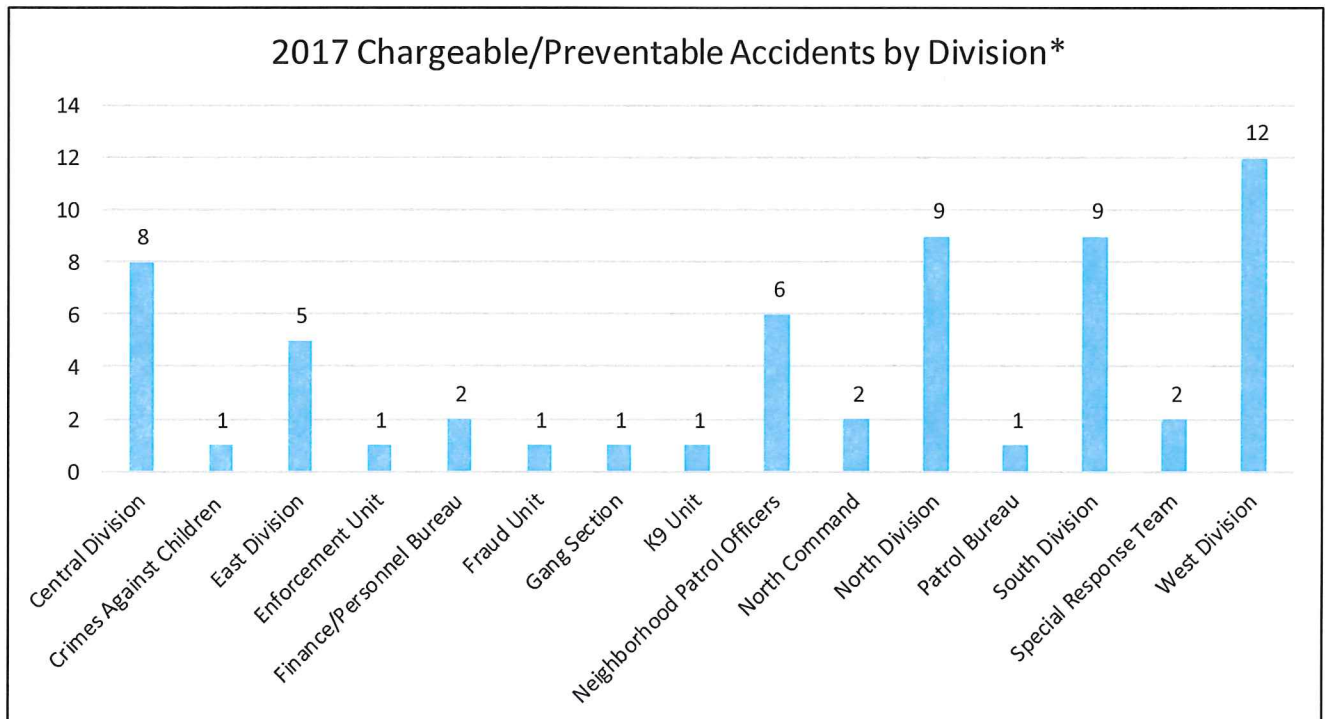
Accidents

- The total number of Chargeable/Preventable Accidents for 2017 is 61.
- The total number of Non-Chargeable/Non-Preventable Accidents for 2017 is 75.
- The total number of Accidents pending review and not included is 95.
- The total number of Accidents in 2017 decreased 16% compared to 2016.



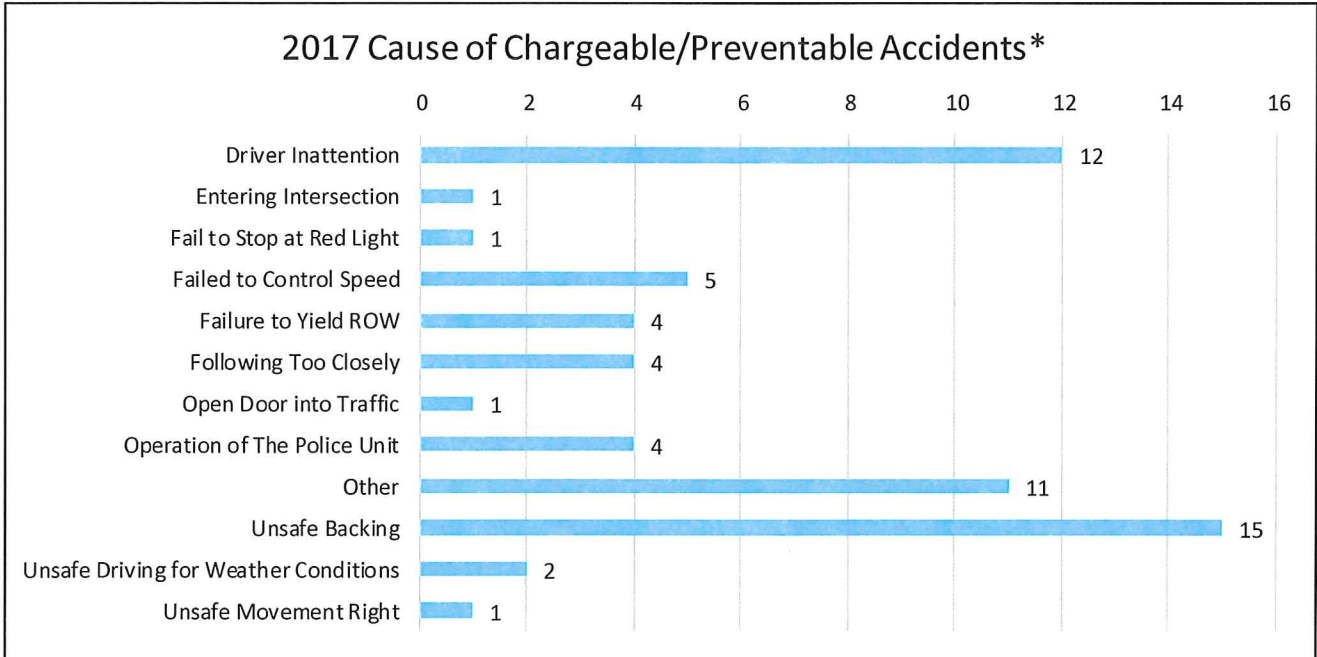
2017 Chargeable/Preventable Accidents by Division*	
Central Division	8
Crimes Against Children Unit	1
East Division	5
Enforcement Unit	1
Finance/Personnel Bureau	2
Fraud Unit	1
Gang Section	1
K9 Unit	1
Neighborhood Patrol Officers	6
North Command	2
North Division	9
Patrol Bureau	1
South Division	9
Special Response Team	2
West Division	12
TOTAL	61

* The *2017 Chargeable/Preventable Accidents by Division* chart includes all officer vehicle accidents entered into BlueTeam during 2017 that resulted in a chargeable/preventable finding.



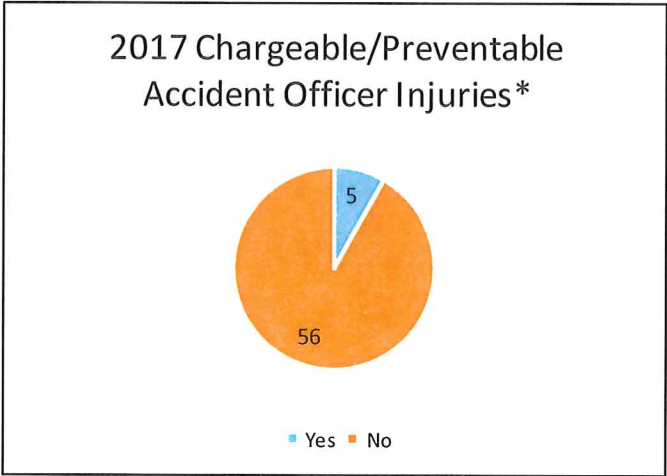
2017 Cause of Chargeable/Preventable Accidents*	
Driver Inattention	12
Entering Intersection	1
Fail to Stop at Red Light	1
Failed to Control Speed	5
Failure to Yield ROW	4
Following Too Closely	4
Open Door into Traffic	1
Operation of The Police Unit	4
Other	11
Unsafe Backing	15
Unsafe Driving for Weather Conditions	2
Unsafe Movement Right	1
TOTAL	61

* The *2017 Cause of Chargeable/Preventable Accidents* chart includes the sustained cause of all accidents entered into BlueTeam during 2017 that resulted in a chargeable/preventable finding.

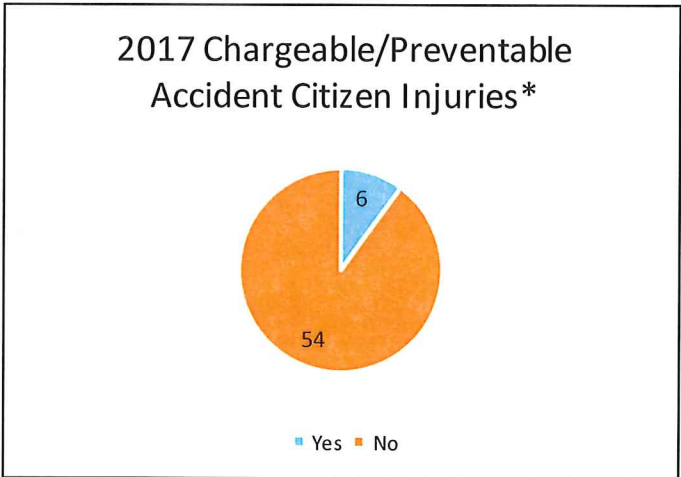


* The *2017 Chargeable/Preventable Accident Injuries* chart shows the number of officers and citizens injured during 2017.

<i>2017 Chargeable/Preventable Accident Officer Injuries*</i>	
Yes	5
No	56



<i>2017 Chargeable/Preventable Citizen Injuries*</i>	
Yes	6
No	54



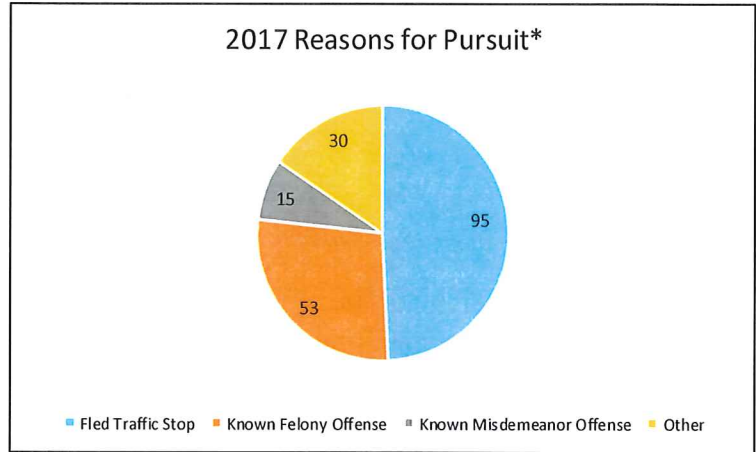


Pursuits

- The total number of Pursuits for 2017 is 193.
- The total number of Pursuits pending review and not included is 9.
- The total number of Pursuits for 2017 increased 5% compared to 2016.

* The *2017 Reasons for Pursuit*, *2017 Pursuits Aborted*, and *2017 Pursuit Accidents* charts show the primary reasons a pursuit was initiated, the number of pursuits aborted, and the number of pursuits that resulted in an accident during 2017.

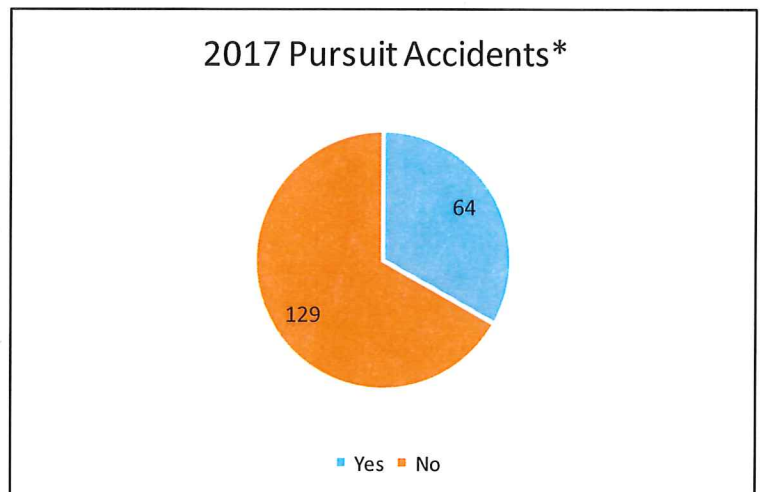
2017 Reasons for Pursuit*	
Fled Traffic Stop	95
Known Felony Offense	53
Known Misdemeanor Offense	15
Other	30
TOTAL	193



2017 Pursuits Aborted*	
Fled Traffic Stop	10
Known Felony Offense	4
Known Misdemeanor Offense	6
Other	3
TOTAL	23



2017 Pursuit Accidents*	
Yes	64
No	129
Total	193



Citizen Charges Resulting from Pursuits*	
DWI	12
Evading Arrest	137
Hindering Apprehension	2
Other	12
Other Felony	80
Other Misdemeanor	43
Resisting Arrest	6
TOTAL	302

* The *Citizen Charges resulting from Pursuits** chart shows the charges against a citizen resulting from the pursuit. Often times the citizen is charged for multiple offenses. Therefore, the count here is higher than the Pursuit count of 193.

